

Crime trends and performance in Brighton & Hove

This report describes crime trends up to January 2009 and reports progress against key crime targets relating to the Community Safety, Crime Reduction and Drugs Strategy, 2008-11.

1. Performance against Targets for Key Crime Types, 2008/09

April 2008 to end of January 2009	number of crimes Apr 07- Jan 08	number of crimes Apr 08- Jan 09	reduction target (from 2007/08 baseline)	2008/09 performance to end January compared with same period in 2007/08		better or worse than same period in 2007/08		rank within 15 benchmarked CDRPs ^a
				on target	not on target	better	worse	
areas with targets			target					(lower rank is better)
Total Crimes	23,302	21,166	-5%	-9.1%		☺		5
Criminal Damage	3,988	3,498	-5%	-12.3%		☺		11
Serious Violence (GBH/more serious violence)	120	132	-10%		+10.0%		☹	9
Assault: Less Serious Injury (ABH)	1,904	1,638	-5%	-14.0%		☺		8
Domestic Burglary	939	1,016	-5%		+8.2%		☹	3
Theft from/of a Motor Vehicle	1,619	1,901	-6%		+17.4%		☹	3
Pedal Cycle Theft	724	857	-10%		+18.4%		☹	6
Domestic Violence Crimes	1127	1013	no target	-10.1%				
Racist Crimes and Incidents	494	278	-5%	-43.7%				
LGBT Hate Crimes and Incidents	164	106	+5%		-35.4%			

Main points

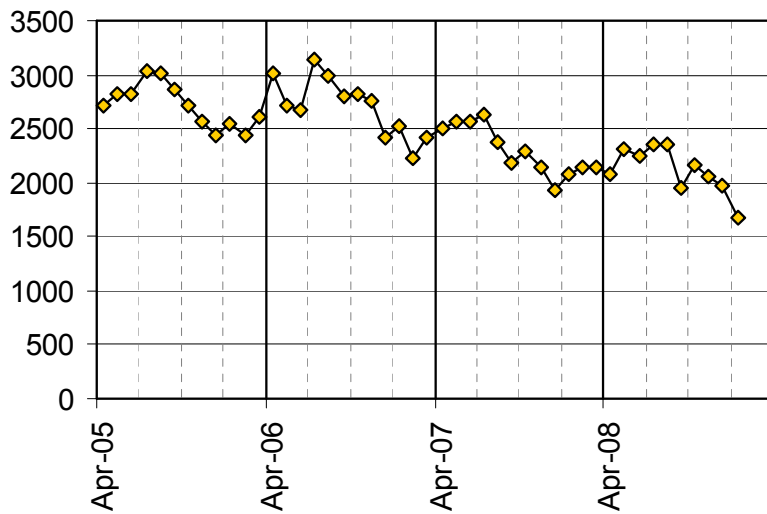
After 10 months (April 2008 – January 2009) total crimes have reduced by 9.1% compared with the same period in the previous year, in excess of the target.

Criminal damage and assaults with less serious injury, both high volume crime types, continue to show very good reductions. Acquisitive crimes are continuing to show a notable increase compared with last year, but the position with domestic burglaries has improved since the last report.

^a See Appendix for further information around the benchmarking arrangements

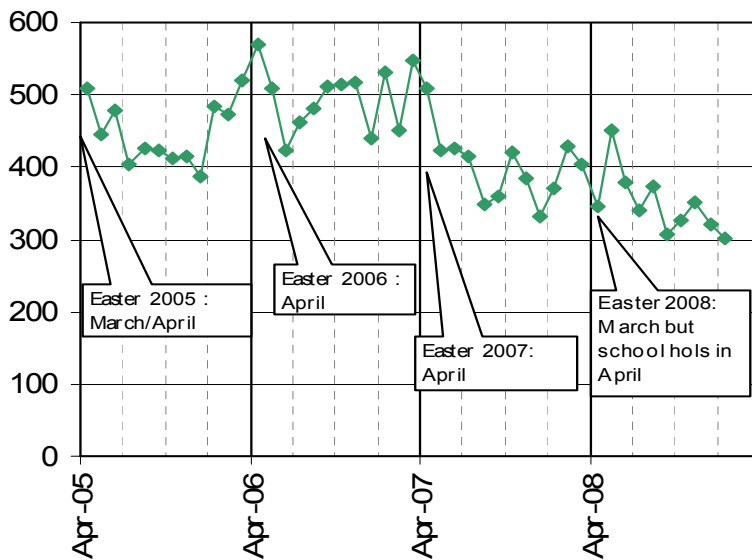
2. Crime trends up to January 2009

Total Crimes, April 2005 to January 2009



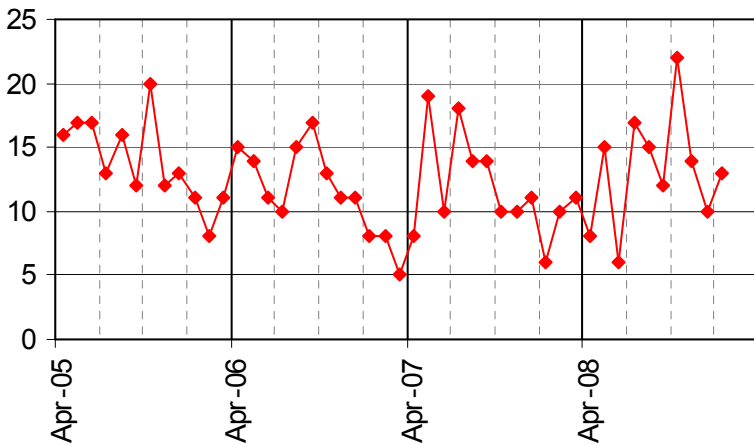
- The number of total crimes in the first 10 months of 2008/09 is 9.1% lower than in the same months last year. The number of crimes in the month January has dropped to its lowest level since April 2005.

Criminal Damage, April 2005 to January 2009



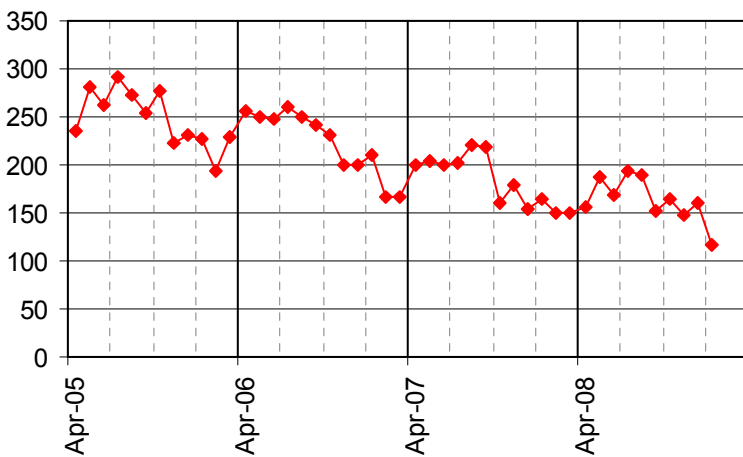
- The number of police recorded criminal damage remain well below last year's level, with recent months showing among the lowest levels of recent years.

Serious Violence (GBH+)
April 2005 to January 2009



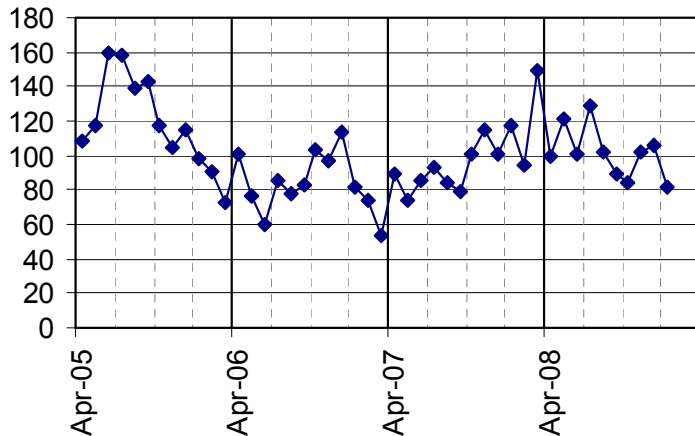
- The number of serious violent crimes (GBH and more serious) is higher between April 2008 and January 2009 than in the same months in the previous year by 12 crimes. (Crimes recorded within this category have been subject to recent review and this has resulted in the numbers in recent months being slightly increased.)

Assault with Less Serious Injury (ABH)
April 2005 to January 2009



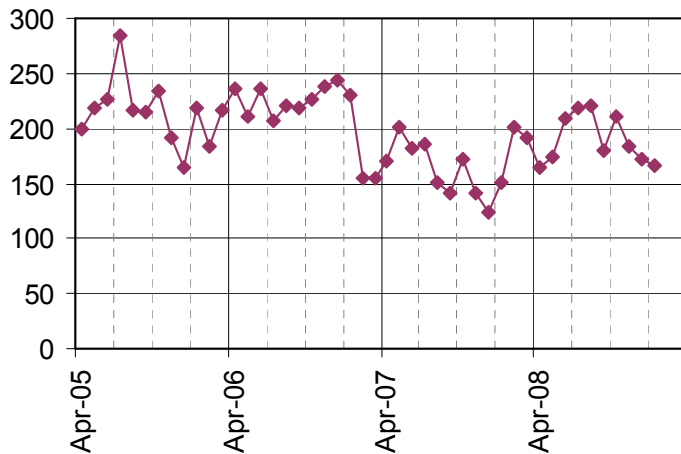
- The year on year decline in assaults with less serious injury is continuing with the number in the first 10 months of 2008/09 being 14% fewer than the same months in 2007/08. The number in January is much lower than in previous months and years.

Domestic Burglary, April 2005 to January 2009



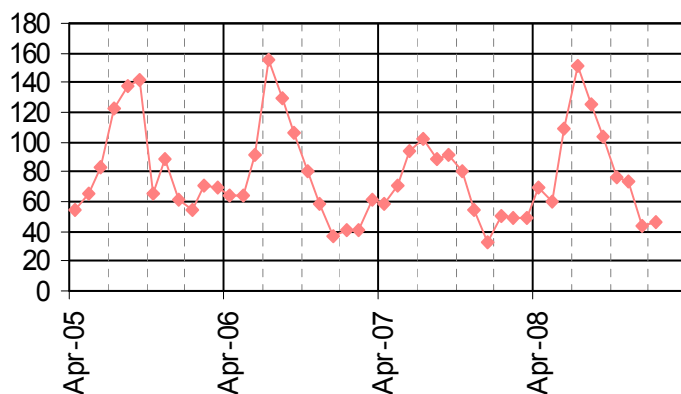
- Numbers of domestic burglaries were showing a long term declining trend in the years up to 2006/7 but rose consistently during 2007/8. Since March 2008 the numbers have resumed a downward trend, but remain 8% higher in 2008/9 to date compared with 2007/8.

Vehicle Crime, April 2005 to January 2009



- Comparing levels in the first five months of 2008/9 with same months in 2007/8, theft of and from (all vehicle crime) has increased by 17%. However, thefts from a vehicle have risen by 33% while thefts of a vehicle have fallen by 11%.

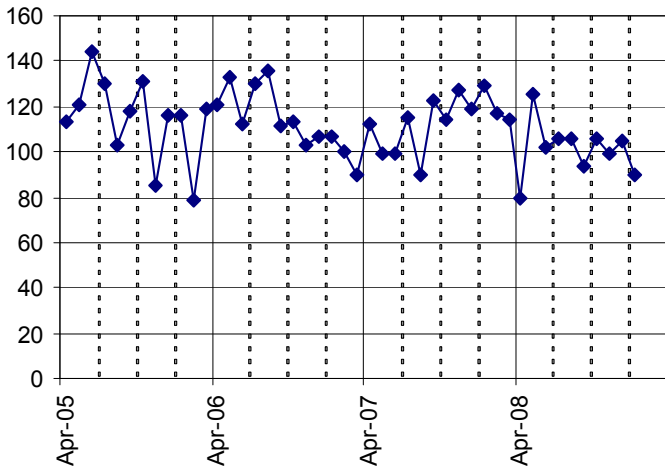
Theft of a Pedal Cycle, April 2005 to January 2009



- Pedal cycle theft shows a strong seasonal effect related to the months when more people cycle. Numbers in the first ten months of 2008/9 are 18% greater than in 2007/8 and also slightly higher than the level recorded in 2006/7.

Police crime data presented in this report only reflect those crimes which are reported and recorded. There is likely to be a level of underreporting in many crime types. However, domestic violence and the hate crimes on this page are likely to be particularly liable to underreporting.

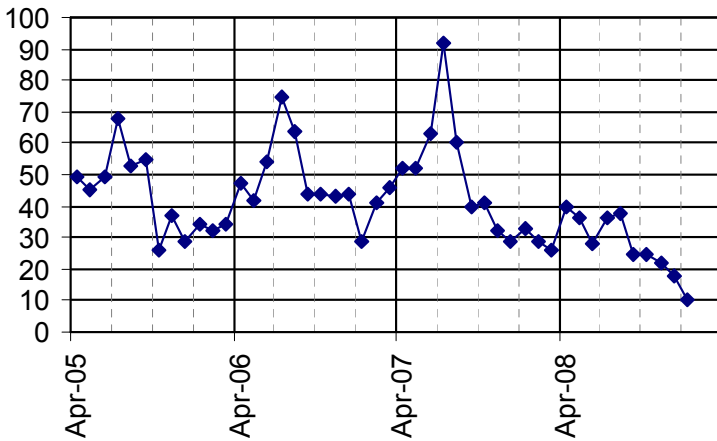
Domestic Violence Crimes, April 2005 to January 2009



- The number of domestic violence crimes remains between about 95 and 105 per month over the last 5 months. The number of crimes has fluctuated over the period shown in the graph, but recent months have shown lower than average numbers.

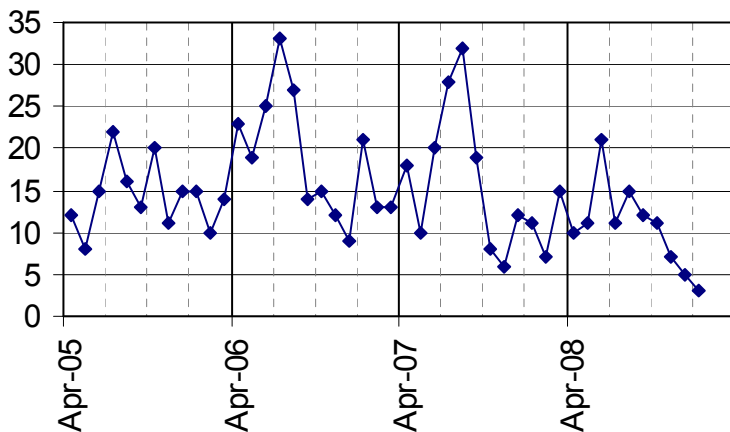
Please note that crimes and incidents data would normally be reported here. However, there is a problem with the reliability of DV incident data at the moment so these have been omitted from the current report.

Racist and Religiously Motivated Crimes and Incidents, April 2005 to January 2009



- A long term rising trend, as well as a seasonal pattern (with enhanced levels in the summer, particularly the month of July), has previously been evident in the data on racist and religiously motivated crimes and incidents. However, levels in the first ten months of 2008/9 have been consistently lower than in the same months in 2007/8.

LGBT Hate Crimes and Incidents, April 2005 to January 2009



- A seasonal pattern continues to be evident in the data on homophobic, biphobic and transphobic crimes and incidents, with higher levels tending to occur in the summer. Numbers recorded in 2008/09 to date are lower than in recent years, only 3 crimes and incidents recorded by the police in January 2009.

Appendix.

A note on how Brighton & Hove's performance is compared with other CDRPs.

For the purposes of assessing the relative performance of Brighton & Hove CDRP in reducing crime, our performance is compared (benchmarked) with the performance of 14 other 'Most Similar' CDRPs. The Home Office have created these groupings to help provide information on how CDRPs, police forces, etc. are performing.

CDRPs within a 'Most Similar' grouping have been assessed as having similar characteristics in terms of 24 socio-demographic and geographic variables which are strongly linked to increased levels of crime, fear of crime, or incidents.

We are able to compare our crime trends and current performance with our Most Similar CDRPs. The data presented on page 1 of this report (see right-most column of the table) shows our ranked position within this group of 15 CDRPs. For example, a ranking of 1 indicates that a CDRP is performing best within the group, and a ranking of 8 shows that the CDRP is in the middle ranked position.

Other Members of Brighton & Hove's Most Similar CDRP Group (from Apr 2008) area as follows:

LB Barnet
Bournemouth
Cheltenham
LB Croydon
LB Ealing
Eastbourne
LB Hackney
LB Hammersmith & Fulham
LB Kensington & Chelsea
LB Lambeth
Reading
LB Southwark
LB Wandsworth
Wycombe